

## Monument Valley - Grand Canyon - May 2011



Dear Friends,

This is going to be a shorter newsletter than usual because I just came home from our Las Vegas Utah Arizona Tour and I leave on Sunday for RT 66. If you follow me on Facebook you can track us as we make our way along RT 66 from Chicago to LA. It is certainly different from the riding we had last week but riding the "Mother Road" is something very special.

What a difference a year makes. Last year our Las Vegas/Utah Arizona had some less than perfect weather. This year we could not have had better weather. From the time we arrived in Las Vegas to the time we left Las Vegas a week later the weather was just amazing. After a short shuttle ride to our hotel we were soon on our motorcycles riding to Hoover Dam and the new Bridge. The following morning we started our 6-day road trip with a ride down The Strip in Las Vegas. The next 6-days was an amazing ride through, Zion National Park (NP), Bryce Canyon NP, Escalante Grand Staircase National Monument (NM), Capitol Reef NP, Natural Bridges NM, Glen Canyon National Recreation Area, Monument Valley, Painted Desert Grand Canyon NP and Old RT 66. I have put together a short slide show on YouTube of the week's ride. To view the slide show go to:

<http://www.youtube.com/watch?v=L12jVW8GKdE>

I made an error in Willie Nourse's email last month's newsletter so I repeated the article about Arizona Metal Artwork with hope that you check out his web site and order some of his amazing metal artwork. I

### **Tour On 2, Inc . May Newsletter 2011**



PO Box 278 Yorkville, IL  
60560-9998

Phone: 630-660-4733  
Email: [touon2@aol.com](mailto:touon2@aol.com)  
[www.tourontwo.com](http://www.tourontwo.com)

#### **Tour On 2 – 2011 Schedule**

**US RT 66 – May 14-28  
(Starts in Chicago  
and ends in Santa Monica,  
Ca.)**

**Great Lakes Tour – June  
18-25**

**Illinois RT 66 Tour – July**

still have not found the perfect place to hang my "Harley Wings" but I do know that Pam will not let me hang them in her kitchen!

I have also repeated the tour description for our Great Lakes Tour 6/18-25. We still have a few openings. I am so looking forward to riding back to the UP and riding along the southern coast of Lake Superior. It will be a great ride and I hope you will consider riding with us this year.

The weekend of June 10-12 is the Illinois State HOG rally in Rockford, Illinois. Look for our ad in the rally guide. On Saturday morning we are leading a ride in NW Illinois. We will ride all day but be back in time for the closing ceremonies of the rally. If you are not attending but would like to ride with us see our ad below and give us a call to save your spot on the ride. We will ride some amazing back roads that many in Illinois do not know exist. We will stop for lunch before heading back to Rockford.

I have had to deal with jealous wives lately. Not Pam, but wives of customers and riders that want to come on our tours but do not want to ride all day on the back of a motorcycle. While we keep our riding days short, approximately 250 miles, they simply do not want to ride that long or that many consecutive days on the back of a motorcycle. We have a solution to that problem. If your spouse or friends want to tour with us but would prefer to ride in a car that is fine. You can follow behind the motorcycles and see the great sights and experience what the riders experience but from the seat of a car. If this interests you please contact me and we will include you in our group's tours.

Finally, I am still looking for articles or riding tips from our readers, to include in our monthly newsletter. I also welcome any suggestions you may have for future newsletters. I cannot guarantee that they will get published but it could be worth a "Get Away For A Day" ride if I do use your article or suggestion. The prize would be a guided day ride that would include breakfast and lunch. We will start awarding the prize starting with our April Newsletter. Send your articles, ideas or suggestions to: [touren2@aol.com](mailto:touren2@aol.com)

Ride Safe,  
Bill and Pam Gade



**2-4 \*\***

**Upper Mississippi River  
Tour  
July 8 - 10 \*\***

**Door County Wisconsin  
July 15 - 17 \*\***

**71st Sturgis Rally August  
5 - 13**

**Door County Wisconsin  
August 26 - 28 \*\***

**Blue Ridge Parkway/Tail  
of the Dragon  
September 3 - 10**

**Ozark Mountain Tour -  
September 18 - 25**

**Upper Mississippi River  
Fall Colors Tour  
September 30 - October 2  
\*\***

**\*\*3-Day Tours include  
Meals and Lodging**

### Custom Metal Art



When it comes to art the only thing

I can draw is flies. We were fortunate to meet Willie Norse while making a gas stop in Payson, Arizona. Willie makes some amazing things out of metal and then plates them with an antique copper "rainbow" like finish. Several of us bought his Harley Davidson Wings and one couple had a custom saw made for their ranch in Canada. His work is amazing and is very reasonably priced. Check out his web site at:

[www.arizonametalart.com](http://www.arizonametalart.com)

or give Willie a call at:

928-478-9943 or email him at

[willienorse@gmail.com](mailto:willienorse@gmail.com)

If you do not see what you want on his web site

his artwork skills and modern technology can make something exactly for you.

## Safe Riding Tip

If you have not replaced your tires in 10K miles it may be time to replace them. On my Harley Davidson motorcycles I typically replace the rear tire every 10K miles and the front tire every 20K miles. The new Dunlop tire put on the Harley Davidson touring bikes in 2009 gets better mileage, than the prior tire, but it still needs to be replaced when it is worn beyond safe levels. I see people riding motorcycles with tires that are dangerously low on tire tread. I use a tire tread depth gauge to measure my tires. 3/32" tire tread depth is an indicator that your tires need to be replaced.

Keeping your tires inflated to the manufacture's recommendations is an absolute must. You should also check your tires at least once a week to ensure they are properly inflated.

Sufficient tire tread depth and proper inflation will help you to maintain maximum traction. We all know that wet road surfaces can create slick road conditions even with tires with proper tread and inflation. Riding on road surfaces with tires under inflated or worn can create very dangerous riding conditions. There are many things we cannot control while riding but we can control the condition of our tires.

Finally, when replacing your tires follow your motorcycle manufacturer's recommendations. Specific tires and tire sizes are critical to safe operation of your motorcycle. Buy the best tire you can afford and feel confident your motorcycle will perform as designed and will help to keep your riding safe - at least from a tire perspective!

Ride Safe!  
Bill

## Motorcycle Transport Service:

We use Haulin Hogs Transport for our Ship Fly and Ride tours. You can reach owner and operator Mark Gall at: 630-800-8337 or at his web site at: [www.haulinhogstransport.com](http://www.haulinhogstransport.com)



Mark Gall

# GUIDED MOTORCYCLE TOURS



*"We take care of everything, just show up ready to ride!"*

Ride with us on Saturday from the rally site!  
Call 630-660-4733 to spend the day riding with us.

**[www.TourOnTwo.com](http://www.TourOnTwo.com)**  
[touon2@aol.com](mailto:touon2@aol.com)

## Featured Customer of the month



Doug D. - Illinois  
Riding with Tour on 2 has by far been the best experience I have ever had while riding. The April/May trip to Nevada, Utah, Arizona, New Mexico & Colorado took me to places I never saw before and probably never would have if I hadn't gone on this trip. Tour on 2 took care of all travel arrangements, including airfare,

**Call to reserve your spot as we ride NW Illinois and SW Wisconsin. We plan on leaving the Rally Site, at the Clock Tower Inn approximately 9:30 AM. We will meet at 9:00 AM for a ride briefing. We will be back to the Rally site for the closing ceremonies. It will be a great day of riding and I am sure I will lead you on roads you have never been on in Illinois. Join us and get acquainted and see how we operate our rides. Please call so we have an idea how many riders to expect. It should be a very enjoyable riding day!**

bike transportation, and hotels. All I had to do was show up. Thank you Bill and Pam for such an amazing experience and I can not wait to book my next trip with you.

### **Featured Ride - Great Lakes Tour - June 18-25**

This tour originally started out as a 5-day tour. I know many people that ride around Lake Michigan in 3-5 days, but they are really missing some amazing places in the Upper Peninsula of Michigan and Northern Wisconsin when they do. I have changed this tour's name to the "Great Lakes Tour," because you will ride along Lake Michigan, Lake Huron and Lake Superior - 3 of the 5 Great Lakes.

Day 1 will start in the SW suburbs of Chicago. We will pick a starting spot that is centrally located for all our riders. We will meet for breakfast at 7:00AM followed by a safety and ride briefing before starting our ride around 8:00AM. We will start earlier than usual because we need to get around the Southern Tip of Lake Michigan before traffic builds up. Fortunately, the construction in that area has been completed. We normally do not take expressways or toll ways (bring your I-Pass), but this is an instance where we will make an exception and get out of the Chicago area as quickly and as easily as possible. Once in Michigan we follow the eastern shore of Lake Michigan north. We will stop for lunch near Holland and we will spend the evening in Ludington. We will ride approximately 265 miles on our first day.

Day 2 will start like Day 1 with a ride briefing after breakfast. We will leave the hotel around 9:00 AM.

This begins the truly enjoyable riding for the week.

We will stop near Traverse City for lunch and ride through the "Tunnel of Trees" in the afternoon. We will ride approximately 275 miles before we get to Mackinaw City for the evening.

Day 3 will start like prior days but we will stop for photos by the Mackinac Bridge before crossing it. It is truly an experience riding your motorcycle over a bridge while an ocean freight ship passes beneath you. After we cross the bridge we'll be in Michigan's Upper Peninsula. After riding through Paradise, we will see the Tahquamenon Falls and have lunch at a nearby lodge. We will spend the evening in Manistique after a very enjoyable 200 mile riding day.

Day 4 finds us riding back north from the northern shores of Lake Michigan to the southern shores of Lake Superior. We will stop for lunch in Marquette and take time for a great photo opportunity on the shore of Lake Superior. We will continue west and then north to the Keweenaw Peninsula and to the town of Houghton, where we will spend the evening. This is iron ore and copper country and the mines in this area were instrumental to the industrialization of the United States. Our ride on this day will be approximately 200 miles.

On Day 5, we will continue our ride north along the Lake Superior shores of the Keweenaw Peninsula. We will make a loop around the peninsula and then head south and then west to Bayfield Wisconsin and the Apostle Islands National Lake Shore. I do not have to tell you how beautiful it is there. The 270 miles we ride this day will go by quickly, and we will spend the evening in Bayfield.

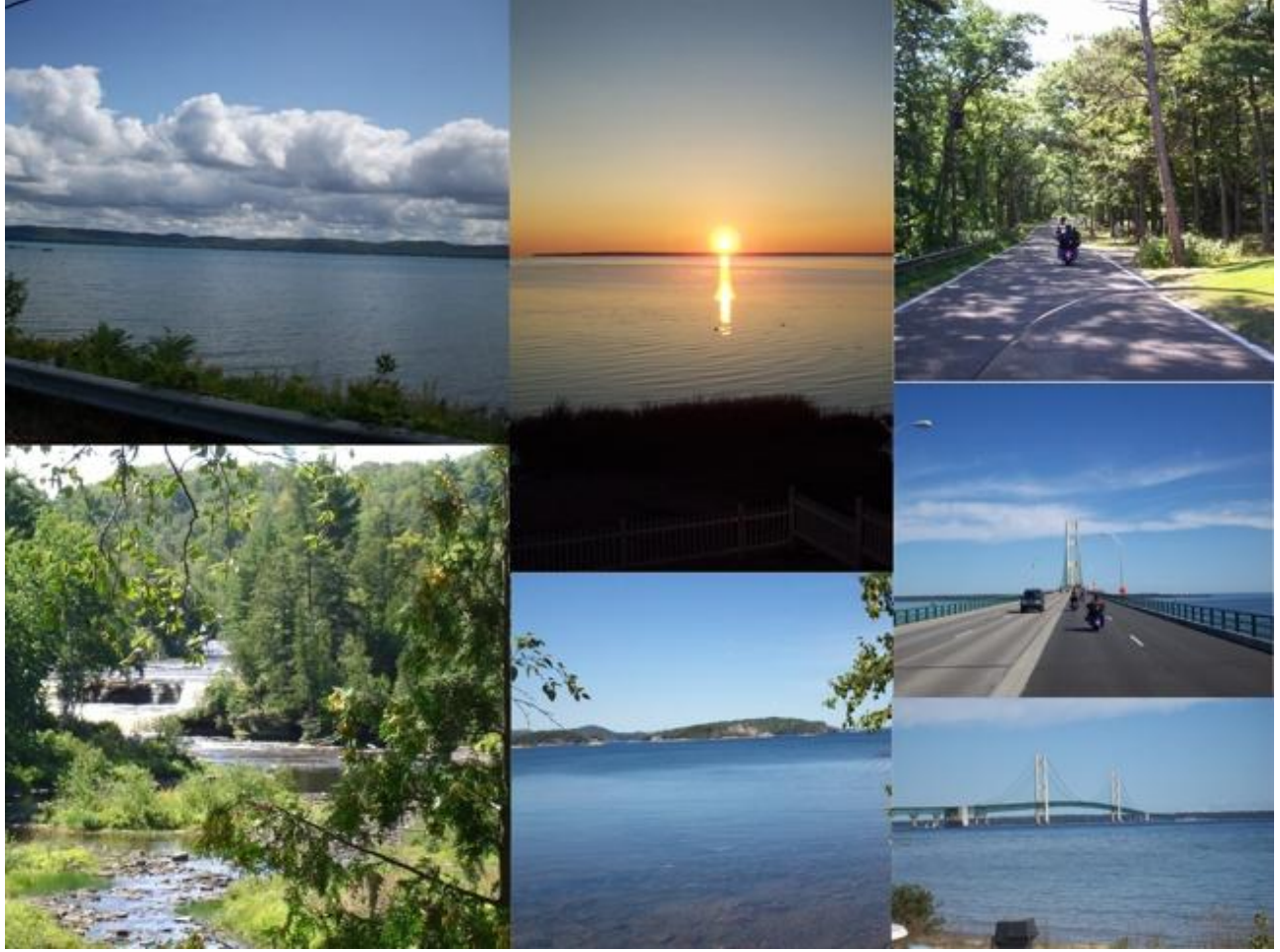
Day 6 is a great day of riding through the north woods of Wisconsin and the Upper Peninsula of Michigan. This area is very popular with hunters and fishermen, and you will get to see why. We will ride approximately 290 miles before we reach our hotel in Escanaba, which is back on the shores of Lake Michigan.

On Day 7, we begin our journey south to Green Bay and then north to Door County. We will ride the length of the Door County Peninsula before heading back south to Manitowoc for the evening. If you do not want to ride to Door County I would suggest you visit the museum and tour Lambeau Field, home of the Green Bay Packers. We will ride approximately 290 miles to reach our Hotel in Manitowoc. If you have never been to Door County, I can assure you that it is a place you will enjoy and return to in the future. We have a group dinner that evening at a very good restaurant - you better be hungry at this place!

Day 8 is our last riding day and we will arrive back home that afternoon. We will ride south along Lake Michigan before heading west and then south to avoid the traffic of Milwaukee and Chicago. It is an easy day's ride at 225 miles and I am sure you will be glad to get home and sleep in your own bed.

As with all our tours, space is limited. If you are interested in this or any of our other tours contact us today to reserve a place on the tour. Ride Safe!

## Great Lakes Tour Photos



Tour On 2 Inc., PO Box 278 Yorkville, IL 60560-9998 630-660-4733

[Forward to a Friend](#)

[SmartUnsubscribe<sup>sm</sup>](#)

This email was sent to [stephen\\_e\\_mcdonald@hotmail.com](mailto:stephen_e_mcdonald@hotmail.com) by [touon2@aol.com](mailto:touon2@aol.com)  
[Update Profile/Email Address](#) | [SmartUnsubscribe<sup>sm</sup> from this list](#) | [Privacy Policy](#)

=